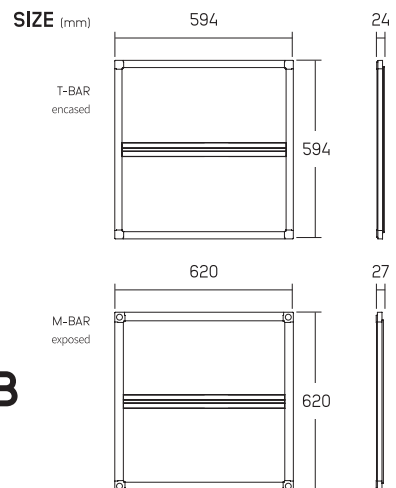
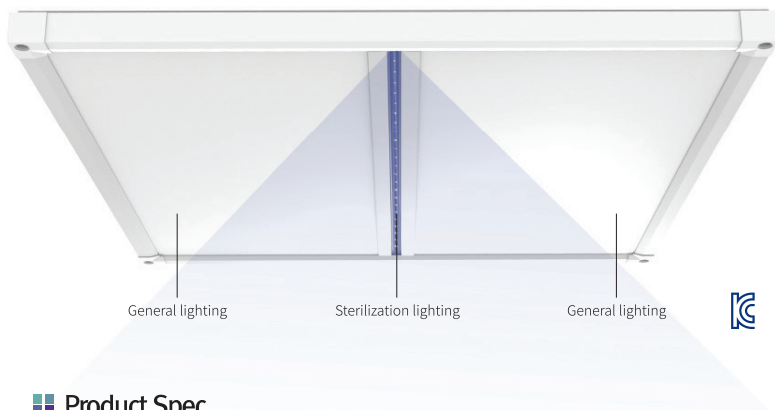


2 in 1 Continuous Sanitisation & Everyday Lighting
Non-UVC Disinfectant LED Panel



Clean Edge is a new class of antimicrobial light technology which safely sanitises space and surfaces while continuing to provide lighting. Using a safe LED light in the visible spectrum its continuous sanitisation can be used in all areas of our daily lives – hospitals, retail, schools, hotels and in our workplaces and homes.

▶ PRODUCT SPECIFICATION



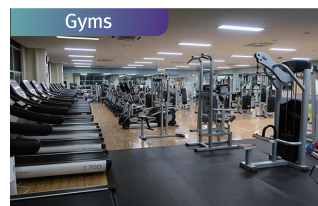
CE CB

Product Spec

Model No.	Installation	Power (W)	Luminous Flux (lm)	CCT (K) (Sterilization section excluded)	Material	Size (mm)	Weight (kg)	Safety Certification	Manufacturer
S-RLP3029-50-C002	T-BAR (encased)	295W(general lighting) + 285W(sterilization lighting) (2ch or 1ch)	4,100	5,000	PC, Steel, PS, PET, SUS / White	L594 / W594 / H24	3.5	KC, CE, CB	Maltani inc. (Made in Korea)
S-RLP3029-40-C002				4,000					
S-RLP3029-30-C002				3,000					
S-RLP3029-50-C001	M-BAR (exposed)	295W(general lighting) + 285W(sterilization lighting) (2ch or 1ch)	4,100	5,000	PC, Steel, PS, PET, SUS / White	L620 / W620 / H27	3.85	KC, CE, CB	Maltani inc. (Made in Korea)
S-RLP3029-40-C001				4,000					
S-RLP3029-30-C001				3,000					

※ T-BAR, size other than standard products, color temperature separate inquiry.

※ This specification is based on the Republic of Korea, please inquire for the production of power voltage for its country.



Bacteria, virus and germ microorganisms are a global health concern. The recent COVID-19 pandemic has caused millions of deaths, new disease strains appear daily and Antimicrobial Resistance (AMR) is now one of the top 10 global public health threats facing humanity according to the World Health Organisation.

► KEY BENEFITS

01



Continuous sanitisation & disinfection

02



Covers all space and surfaces
light touches

03




Eliminates common germs by +99%*

04



Highest human safety grade IEC62471

05



Effecting testing against CV-19



- No ongoing costs
- No harmful chemicals
- No filter replacements or maintenance
- No disruption to business
- No ventilation required
- No complicated usage



WARRANTY PERIOD

2 YEARS



LIGHTING LIFE

50,000 HOURS



Use 24 hrs a day

6 YEARS



Use 12 hrs a day

12 YEARS



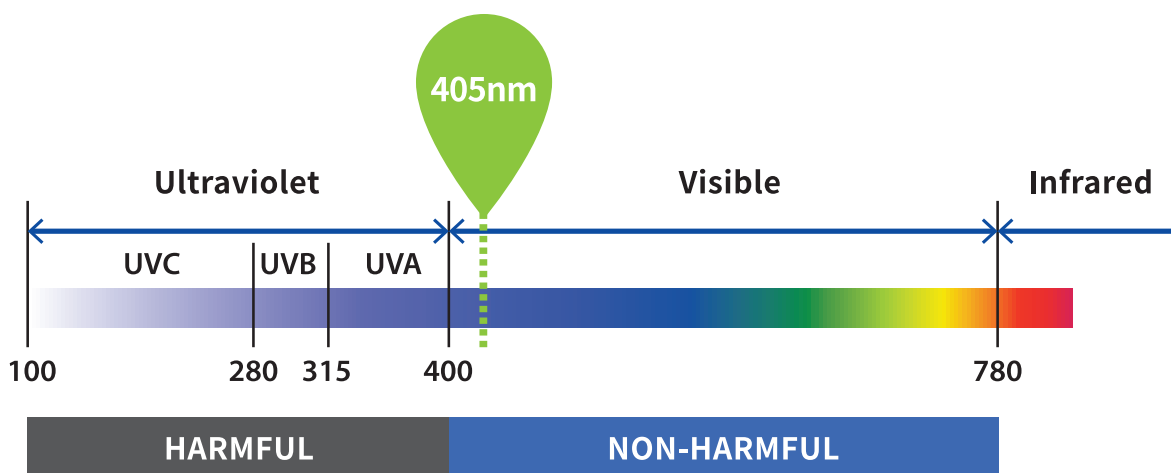
Use 8 hrs a day

17 YEARS

How Clean Edge works

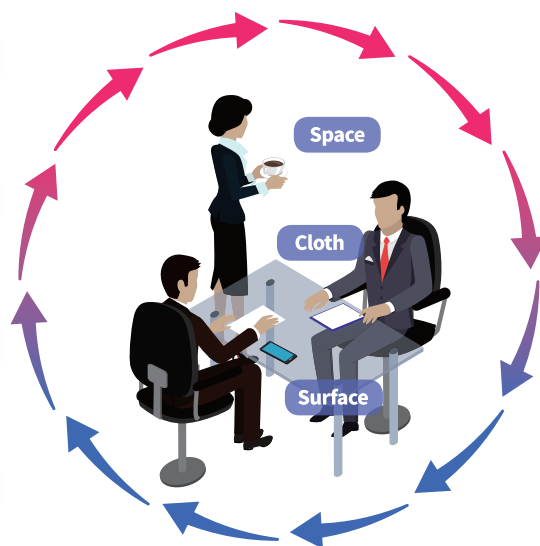
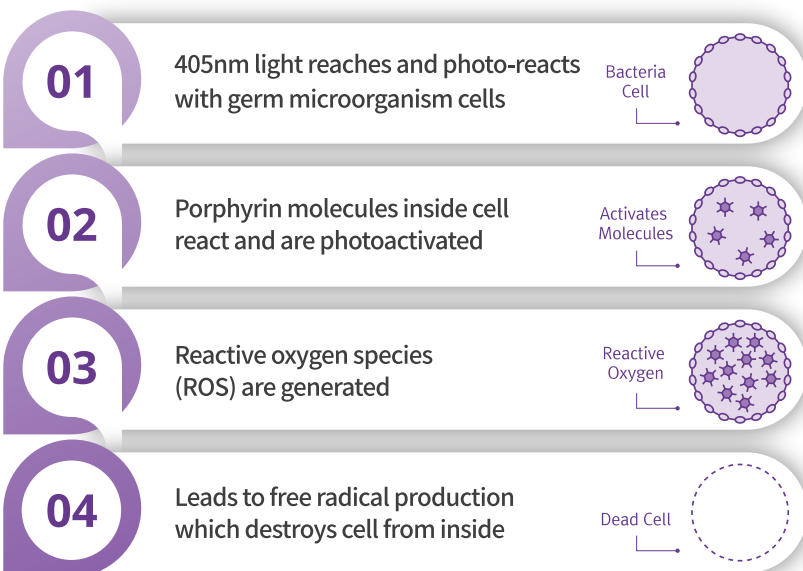
Clean Edge uses 405nm wavelength

which is in the high energy visible (HEV) spectrum of light. The antimicrobial nature of 405nm wavelength was first discovered in 1892 at a lab in London and further testing investigated the efficacy and safety of its use. Clean Edge is the first non-UVC LED light panel to be tested and certified for its disinfection abilities and safe unrestricted usage for people.



Clean Edge kills germ cells in 4 stages

Unlike UV (ultraviolet) light that directly destroys microorganisms, the Clean Edge 405nm light ray targets naturally occurring compounds called porphyrins.



The Clean Edge difference

Clean Edge does not use UVC

For decades UVC light has been commonly used to sterilise areas particularly in the healthcare and water industries. UVC is highly effective however is not suitable as an everyday solution due to the damage to human skin and eyes

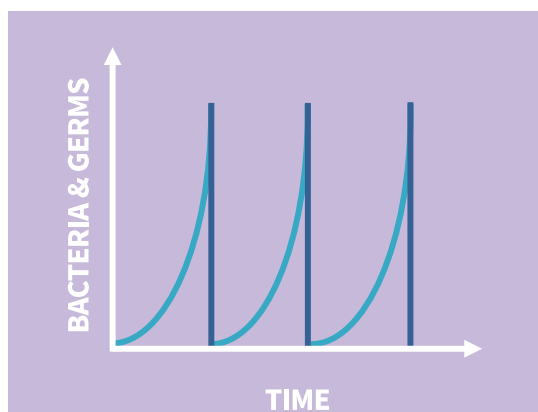
COMPARISON	UVC	CLEANEDGE 405NM
Disinfecting Methodology	Direct sterilisation through DNA damage	Porphyrin reaction decomposition
Disinfection Timing	Short and periodic	Continuous
Usage Method	Areas must be clear of people, pets and plants	Ok to use in public and be exposed to people
Safe for Human Exposure	No - Harmful (can cause cancer, cataracts, etc.)	Yes - Met no risk category for IEC62471
Investment	Expensive and high maintenance due to danger it can cause	One time installation, no ongoing maintenance & costs

Clean Edge is the only continuous solution

There are many effective solutions to eliminate germs such as manual wiping, UVC sterilisation, ozone, vapor bombing. However, they are all temporary. Some germs can multiply to reach 1 million in less than 4 hours. Clean Edge is the only continuous solution for germ build up.

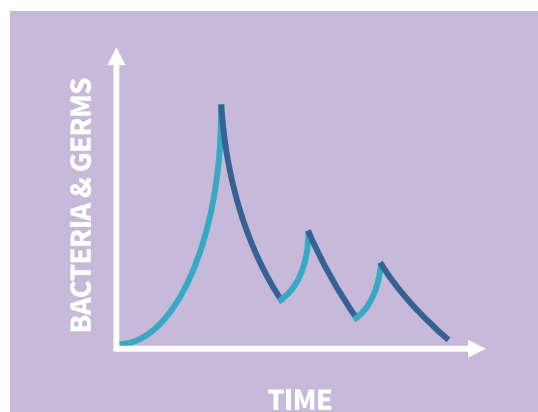
► Temporary manual disinfecting

allows germs to grow and build up between cleaning



► Clean Edge continuous disinfecting

Germ growth is prevented and constantly reduced over time



Safety is more important than strength for everyday sanitisation



The International Electrotechnical Commission is the official organisation to manage international standards for all electrical goods. The IEC 62471 governs the safety of electrical products on the skin and eyes in 8 different areas. Clean Edge met every standard for continuous safe use and was in the 'no risk' category grade.

01. Actinic UV hazard exposure limit for the skin & eye
02. Near-UV hazard exposure limit for the eye
03. Retinal blue light exposure limit
04. Retinal blue light hazard exposure limit-small source
05. Retinal thermal hazard exposure limit
06. Retinal thermal hazard exposure limit-weak visual stimulus
07. Infrared radiation hard exposure limit for the eye
08. Thermal hazard exposure limit for the skin

Page 4 of 19 Report No.: KILT2003-F02334

Test item particulars

Tested lamp continuous wave lamps pulsed lamps

Tested lamp system exempt risk 1 risk 2 risk 3

Lamp classification group exempt risk 1 risk 2 risk 3

Lamp cap N/A

Bulb LED

Rated of the lamp 200-250 V~, 50/60 Hz, 57 W

Furthermore marking on the lamp N/A

Seasoning of lamps according IEC standard N/A

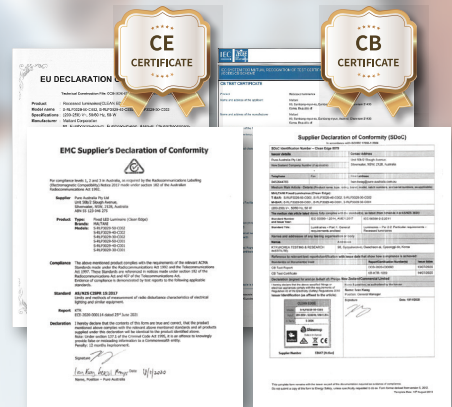
Used measurement instrument Double monochromator

IEC 62471 GRADE REGULATION

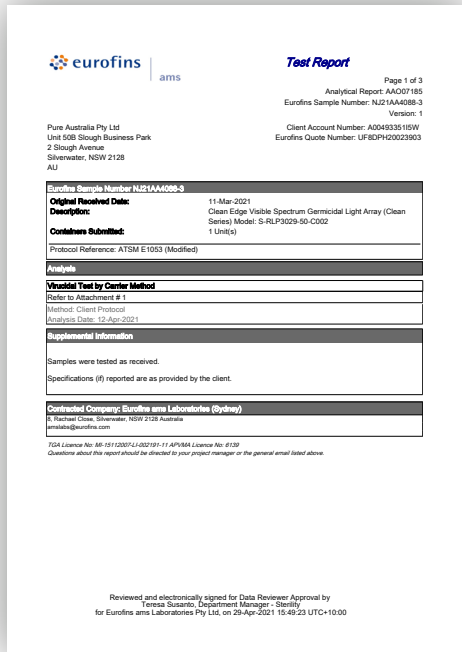
RISK GROUP EXEMPTION No Risk	RISK GROUP 1 Notice	RISK GROUP 2 Caution	RISK GROUP 3 Warning
---	--	---	---

Australian Standards

Clean Edge is approved according to the Electrical Regulatory Authorities Council (ERAC) & Australian Communication & Media Authorities (ACMA) standards. ERAC & ACMA are the official governing organisations for electrical products and the use of the RCM safety mark in Australia.

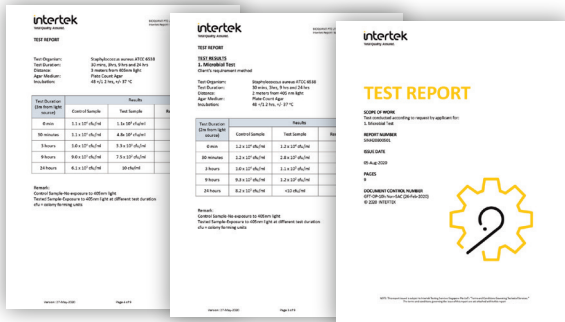


Rigorously Tested, Lap Approved Reduces bacteria & germs +99%



REDUCES CORONAVIRUS by 99.9%

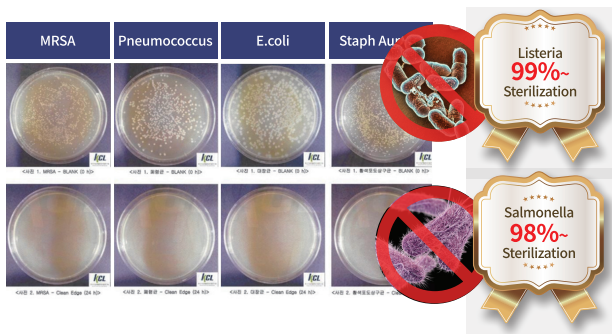
Tested at Eurofins, an Australian NATA accredited laboratory, according to TGA approved methods for COVID testing



Total Quality. Assured.

A global industry leading testing company, headquartered in the UK and listed on the London Stock Exchange

Reduced S.aureus by +99.9% for distances up to 3m



Test Report

Product Name: CLEAN SERIES MODULE

Virus Titer TCID₅₀: 6.81x10⁶

Treatment time	Virus Reduction Rate	
	(log)	(%)
30 min	2.42	99.62%
60 min	≥ 4.42	≥ 99.99%
90 min	≥ 4.00	≥ 99.99%



KR BIOTECH CO., LTD

- E. coli / Staphylococcus aureus / Pneumococcus / MRSA were reduced by over 99.9% within 24 hrs
- Reduced salmonella & listeria by +98%

- Reduced Coronavirus (Sars-CoV-2) by 99.99%

CLEAN EDGE

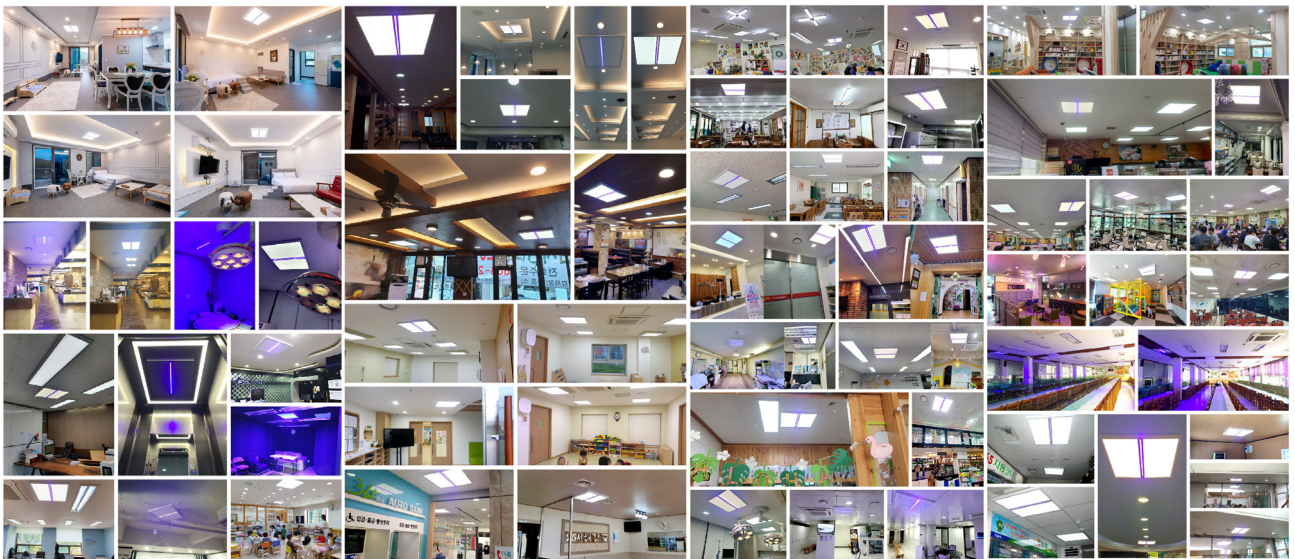
INSTALLATIONS & RAPID GLOBAL EXPANSION



AIRPORT TRANSPORT RELIGIOUS HOSPITAL OFFICES PUBLIC RETAIL



AUSTRALIA GERMANY TURKEY SINGAPORE HONG KONG SOUTH KOREA



Cleanedge was manufactured by Maltani Co., Ltd, Korea's most established lighting company.



- ▶ Korea's largest electric company since 1984
- ▶ ISO 9001, ISO 4001 certified
- ▶ Disinfectant VIOLED technology used in NASA space station
- ▶ Patented technology developed by number 1 UV LED market share company



FMCG Industry Solutions Pty Ltd

ABN 22 135 446 007

Factory 11A, 1 - 3 Endeavour Rd, Caringbah NSW 2229

www.fmcgis.com.au

sales@fmcgis.com.au

1300 628 104 or 02 9540 2288